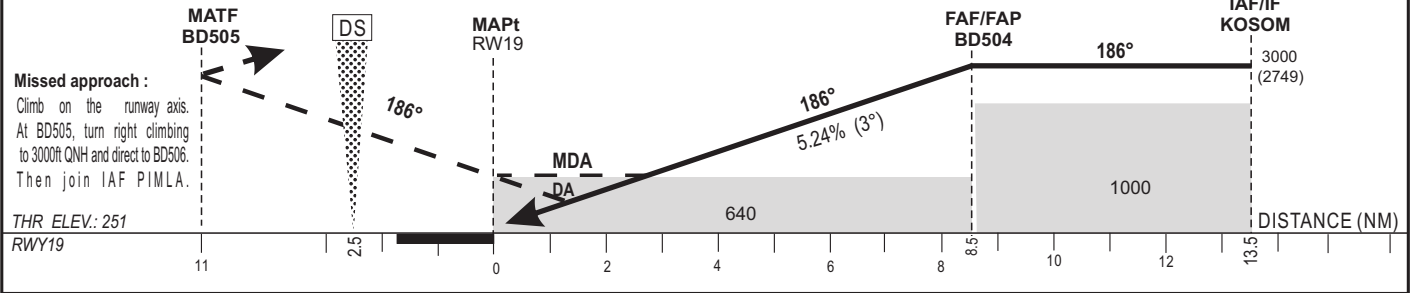


Distance to THR (NM)	FAF	8	7	6	5	4	3	2
Altitude (ft)	3000	2850	2530	2210	1900	1580	1260	940



CAT	LNAV/VNAV				LNAV				Circling (1)				RVR for take-off	
	OCA (OCH)	DA	DH	RVR(1) RVR(2)	OCA (OCH)	MDA	MDH	RVR(1) RVR(2)	OCA (OCH)	MDA	MDH	VIS	CATA - B - C	CAT D
A	496 (245)	500 (250)	700	1000	638 (387)	640 (390)	900	1500	766 (476)	770 (480)	1500		400	400
B	508 (257)	510 (260)	800	1200	638 (387)	640 (390)	1000	1500	837 (547)	840 (550)	1600			
C	516 (265)	520 (270)	800	1200	638 (387)	640 (390)	1000	1800	947 (657)	950 (660)	2400			
D	527 (276)	530 (280)	800	1200	638 (387)	640 (390)	1400	2000	947 (657)	950 (660)	3600			

Notes : - (1) With approach lights - (2) Without approach lights
 - (3) Minimum temperature : 10°C
 - (4) Daytime only - OCH and MDH AAL.